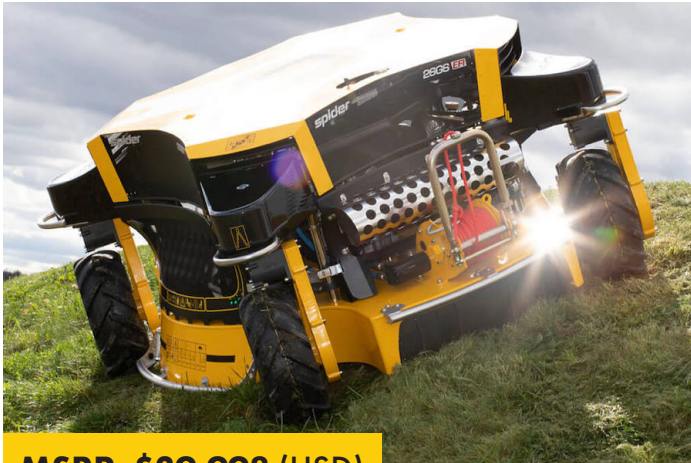


# SPIDER 2SGS EFI



**MSRP: \$39,998 (USD)**

The SPIDER 2SGS EFI can match the productivity of up to 16 brush-cutters or a tractor with a cutting arm. It outputs 30% higher productivity in tough terrain, such as overgrown grass or steep slopes, compared to its predecessor. Additionally, the 2SGS EFI is certified\* to tackle slopes of up to 60 degrees!

## PRODUCT FEATURES:



**KAWASAKI EFI ENGINE**



**ALL-DIRECTION MOWING**



**HYDRAULIC WINCH**



**MOWS SLOPES UP TO 60°**

## TECHNICAL SPECIFICATIONS:

### DRIVE UNIT:

Engine:	Kawasaki FS730V-EFI
Performance:	25.5 HP / 19.0 kW (SAE J1995)
Displacement:	776 ccm.
Fuel Tank:	4.2 gal.
Fuel:	Unleaded Petrol

### DRIVE SYSTEM:

Transmission:	Hydrostatic
Oil Tank:	2.4 gal.
Speed:	0 - 5 mph
Drive:	360°, 4-wheel drive
Skid-Steering:	Yes
Tire Type:	6 x 6.50-8

### PERFORMANCE:

Productivity:	Up to 2.1 acres/hr.
Fuel Consumption:	1 gal/hr.
Climbing Ability:	60° *
Hydraulic Winch:	Yes
Dimensions:	65 x 56 x 32.5 in.
Gross Weight:	853 lbs.

### CUTTING SYSTEM:

Cutting Width:	48.5 in. (4 blades)
Cutting Height:	3.5-5.5 in. / 2.8-4.7 in.
Clutch:	Electromagnetic

\* Official certification documentation available upon request